

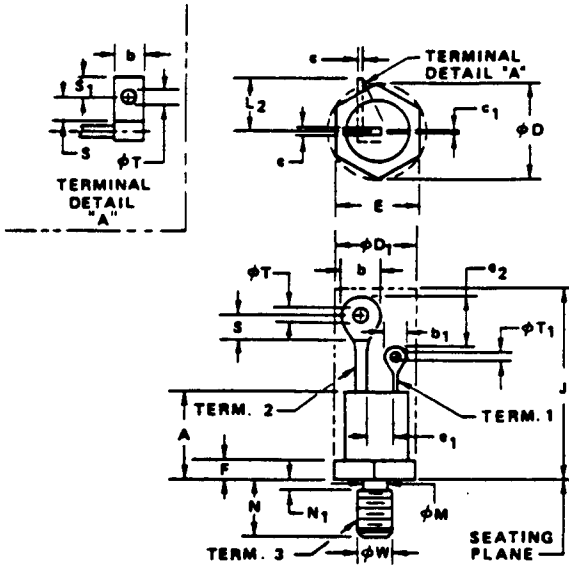
NOTES:

1. Refer to applicable symbol list.
2. Dimensioning and tolerancing per ANSI Y14.5-1966.
3. Device contour except on noted dimensions is optional within zone defined by ϕD_1 and J. ϕD_1 not to exceed actual E.
4. A chamfer (or undercut) on one or both ends of the hexagonal portion is optional.
5. Position of leads in relation to hexagon is not controlled.
6. Angular orientation of terminal(s) is optional.
7. Minimum flat.
8. Minimum spacing between Terminal 1 and 2 at all points.
9. Minimum difference in terminal lengths to establish datum line for numbering terminals.
10. Coated threads shall meet the requirements of ANSI B1.1-1960.
11. Terminal Detail "A" applies to this variation.
12. Elongated hole in terminal is optional.
13. Controlling dimensions: inch.
14. Millimeter dimensions are taken to the same number of places beyond the decimal point as the corresponding inch dimensions. Maximum conversion error is no more than .02 times the smallest unit value of corresponding inch dimensions.

VARIATIONS (ALL DIMENSIONS SHOWN IN MILLIMETERS)

SYMBOL	AA		NOTE	AB		NOTE	AC		NOTE	AD		NOTE	
	MIN.	MAX.		MIN.	MAX.		MIN.	MAX.		MIN.	MAX.		
A	8.382	12.827		7.620	10.160		7.620	14.351		-	-		
b	5.334	7.620	5,6	2.032	3.454	5,6	5.080	7.620	5,6	9.144	11.938	5,6	
b ₁	-	3.556	5,6	2.032	3.454	5,6	2.540	3.556	5,6	2.921	4.064	5,6	
c	-	-		-	-		-	-		1.524	2.921	5,6	
c ₁	-	-		-	-		-	-		.305	1.270	5,6	
ϕD_1	-	16.510		-	12.827		-	20.167		-	31.165		
E	13.843	14.300	3	10.745	11.125	3	16.993	17.475	3	26.188	27.000	3	
e ₁	-	-		.331	-	8	-	-		-	-		
e ₂	3.175	-	9	1.524	-	9	2.794	-	9	-	-		
F	1.905	5.080	4	1.524	4.419	4	1.905	5.080	4	4.318	12.700	4	
J	-	30.302	3	17.780	21.717	3	25.400	31.750	3	-	45.974	3	
L ₂	-	-		-	-		-	-		-	16.510		
ϕM	5.665	6.324		4.217	4.800		5.665	6.324		11.735	12.649		
N	10.719	11.506		10.160	11.506		10.719	11.506		20.244	21.005		
N ₁	-	2.260		-	1.981		-	2.260		-	3.175		
S	3.048	-	7	-	-		3.048	-	7	4.572	-	7	
S ₁	-	-		-	-		-	-		4.572	-		
ϕT	3.175	4.191		1.016	1.905		3.175	4.191		4.572	6.604		
ϕT_1	1.524	-		1.016	1.905		1.397	1.905		1.524	2.032		
ϕW	1/4-28 UNF-2A		10	10-32 UNF-2A		10	1/4-28 UNF-2A		10	1/2-20 UNF-2A		10	
NOTE	1, 2, 13, 14			1, 2, 13, 14			1, 2, 13, 14			1, 2, 11, 13, 14			
REF.	T0-48			T0-64			T0-65			T0-83			
ISSUE	A June 1974			A June 1974			A June 1974			A June 1974			
JEDEC SOLID STATE PRODUCT OUTLINES				TITLE STUD HEX BASE FAMILY (Solid Terminals)				ISSUE A		DATE June 1974		T0-208AA-AD	

NOTES :



1. Refer to applicable symbol list.
2. Dimensioning and tolerancing per AISI Y14.5-1966.
3. Device contour except on noted dimensions is optional within zone defined by ϕD_1 and J. ϕD_1 not to exceed actual E.
4. A chamfer (or undercut) on one or both ends of the hexagonal portion is optional.
5. Position of leads in relation to hexagon is not controlled.
6. Angular orientation of terminal(s) is optional.
7. Minimum flat.
8. Minimum spacing between Terminal 1 and 2 at all points.
9. Minimum difference in terminal lengths to establish datum line for numbering terminals.
10. Coated threads shall meet the requirements of ANSI B1.1-1960.
11. Terminal Detail "A" applies to this variation.
12. Elongated hole in terminal is optional.
13. Controlling dimensions: Inch.

VARIATIONS (ALL DIMENSIONS SHOWN IN INCHES)

SYMBOL	AA		NOTE	AB		NOTE	AC		NOTE	AD		NOTE	
	MIN.	MAX.		MIN.	MAX.		MIN.	MAX.		MIN.	MAX.		
A	.330	.505		.300	.400		.300	.565		-	-		
b	.210	.300	5,6	.080	.136	5,6	.200	.300	5,6	.360	.470	5,6	
b1	-	.140	5,6	.080	.136	5,6	.100	.140	5,6	.115	.160	5,6	
c	-	-		-	-		-	-		.060	.115	5,6	
c1	-	-		-	-		-	-		.012	.050	5,6	
phi D	-	.650		-	.505		-	.794		-	1.227		
phi D1	-	.544	3	-	.424	3	-	.667	3	-	1.031	3	
E	.545	.563		.423	.438		.669	.688		1.031	1.063		
e1	-	-		.013	-	8	-	-	9	-	-		
e2	.125	-	9	.060	-	9	.110	-	9	-	-		
F	.075	.200	4	.060	.174	4	.075	.200	4	.170	.500	4	
J	-	1.193	3	.700	.855	3	1.000	1.250	3	-	1.810	3	
L2	-	-		-	-		-	-		-	.650		
phi M	.223	.249		.166	.189		.223	.249		.462	.498		
N	.422	.453		.400	.453		.422	.453		.797	.827		
N1	-	.089		-	.078		-	.089		-	.125		
S	.120	-	7	-	-		.120	-	7	.180	-	7	
S1	-	-		-	-		-	-		.180	-		
phi T	.125	.165		.040	.075		.125	.165		.180	.260		
phi T1	.060	-		.040	.075		.055	.075		.060	.080		
phi W	1/4-28 UNF-2A		10	10-32 UNF-2A		10	1/4-28 UNF-2A		10	1/2-20 UNF-2A		10	
NOTE	1, 2, 13			1, 2, 13			1, 2, 13			1, 2, 11, 13			
REF.	TO-48			TO-64			TO-65			TO-83			
ISSUE	A June 1974			A June 1974			A June 1974			A June 1974			
JEDEC SOLID STATE PRODUCT OUTLINES				TITLE STUD HEX BASE FAMILY (Solid Terminals)				ISSUE A		DATE June 1974		TO-208AA-AD	